



# The Westconn Manifest

The Monthly Newsletter of the  
Western Connecticut Chapter of the  
National Railway Historical Society



[www.westctnrhs.org](http://www.westctnrhs.org)

Since 1953

December 2004

# Happy Holidays!

Westconn Members attended the Greenwich Train Show  
On Sunday November 28, 2004  
to promote the SoNo Railroad Switch Tower Museum.



Photo by Robert Gambling

**THE WESTCONN MANIFEST**  
is the official newsletter of the Western  
Connecticut Chapter of the National Railway  
Historical Society – (NRHS). Articles which  
appear in

**THE WESTCONN MANIFEST**  
do not express official NRHS position unless  
specifically noted as such. Material from  
**THE WESTCONN MANIFEST** may be  
reprinted in other publications, provided the  
credit is given.

Please address comments, any contributions  
of material, complaints and exchange copies  
of other chapter newsletters to:

Roberta Ballard, Editor  
39 Great Plain Rd.  
Danbury, CT 06811-3923

E-mail – editor@westctnrhs.org

The Western Connecticut Chapter of the  
NRHS is separately incorporated as a CT not-  
for-profit corporation.

The Chapter is involved in the preservation of  
American railroad history and artifacts.

#### Chapter Officers

President : Buck Neulinger  
president@westctnrhs.org  
Vice Pres. : Robert Westerfield  
vp@westctnrhs.org  
Secretary : Roberta Ballard  
secretary@westctnrhs.org  
Treasurer : John Mount  
treasurer@westctnrhs.org  
Nat'l. Director : Tony White  
nationaldirector@westctnrhs.org

The Chapter meets monthly, usually on the 4<sup>th</sup>  
Monday, at the United Congregational Church  
275 Richards Ave. in Norwalk, CT or at the  
SoNo Switch Tower Museum  
77 Washington St. Norwalk, CT  
at 8 P.M.

Meeting dates for 2004:

1/26, 2/23, 3/22, 4/26, 5/24\*, 6/28\*, 7/26\*,  
8/23\*, 9/27\*, 10/25, 11/22 and **12/20**.

\*Chapter meeting to held at the SoNo Switch  
Tower in South Norwalk, CT

The SoNo Switch Tower Museum is  
maintained and operated by volunteers of the  
Western Connecticut Chapter.

Western Connecticut Chapter - NRHS  
Inc.

77 Washington Street  
Norwalk, CT 06854

203 246-6958

www.westctnrhs.org  
www.sonotower.org



### New Members

Philippe Cheyette - Norwalk, CT  
Daniel Gallo, Sr. - New Rochelle, NY  
Anthony Maida - Port Chester, NY



Photo Credit John Mount

December 2, 2004 - **Providence & Worcester** train **NR-2** (Daily local to Groton and Old Saybrook from Plainfield, CT) on track 3 in Old Saybrook waiting for **NH-1** ( Daily out of **Cedar Hill Yard**, switches New Haven area and Shoreline to Old Saybrook). **NR-2** crew going to Super Stop & Shop for lunch. Upon arrival, **NH-1** will hand over 21 cars of coal for Worcester.

Robert Briechle reports that he is in the process of booking a vacation with a Scottish railway buff friend of his.

Below are some of the highlights:

[1] They will be on Rarotonga for several days, the largest of the Cook Islands in the South Pacific. There is an operating Polish steam locomotive on a half mile of track on the island, which is around 22 miles around the periphery road. Go to Google with the search word "Rarotonga" for info on the island and use Rarotonga Locomotive for the story of how it got there. I expect to have a cab ride.

[2] They will be doing railfanning on Tasmania for about a week, plenty to see there. There is a funicular railway and a number of narrow gauge operations.

[3] And they will ride The Ghan, one of Australia's named passenger trains, from Adelaide to Alice Springs to see Ayers Rock and then a few days later, on up by rail to Darwin which is now a major port city since the Australian national government built port facilities there so that containers from Asia don't have to go all the way around to Sydney. What also came about was a major upgrade of the rail line from Adelaide to Darwin to haul the thousands of containers which can reach Australia more quickly and more cheaply. Terrific boost to rail revenue.

## The SoNo Switch Tower Museum

Operated Special Holiday hours on

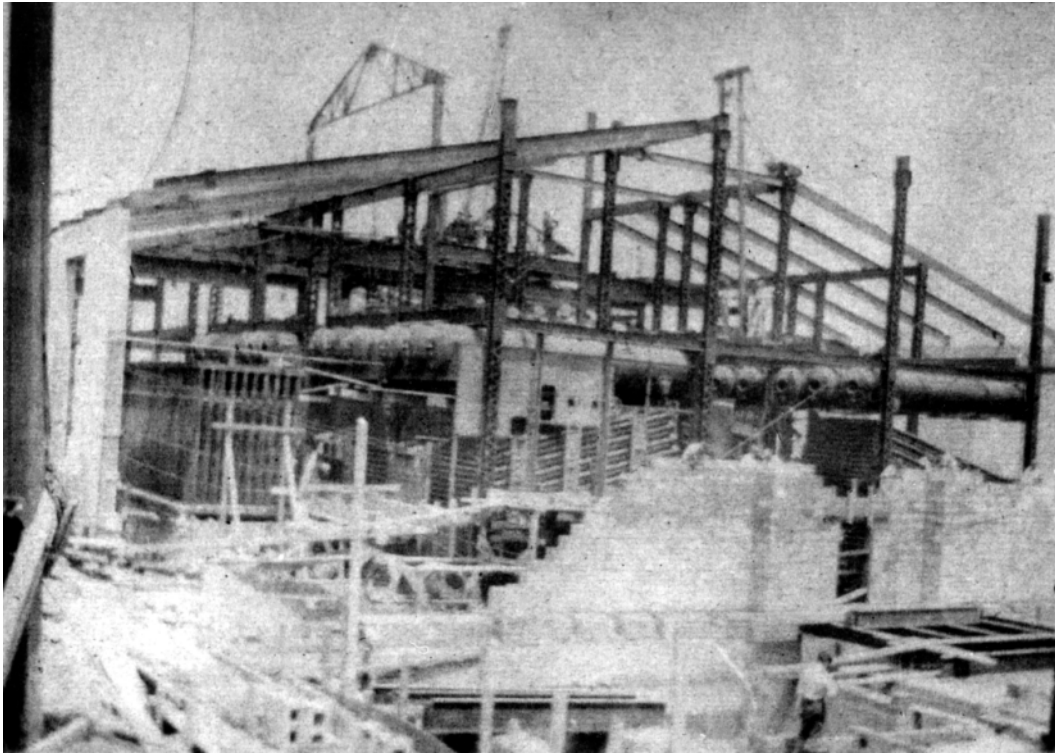
Dec. 11, 12, 18 & 19

Thanks to our volunteers.

***Thank you for volunteering!***

**The Sono Switch Tower Museum** is officially closed until May 2005.

---

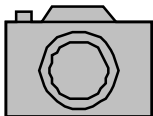


Al Brecken sent in this 1906 photograph of the Cos Cob Power Plant under construction, showing the erection of the steam boilers and the erection of the steel-framing for the boiler-room. The cylinders set in a horizontal position are the boiler steam-drums. In the foreground is what will be the turbine room.

---

The Western Connecticut Chapter, NRHS Inc. supports Operation Lifesaver

**Our Next Chapter meeting will be  
Monday, December 20, 2004 - 8:00 P.M. at:  
At The United Congregational Church  
275 Richards Ave. Norwalk, CT**



Entertainment this month will be provided by:

**Jim Mescher**

Bob Gambling will provide refreshments.

