



The Westconn Manifest

The Monthly Newsletter of the
Western Connecticut Chapter of the
National Railway Historical Society



www.westctrhs.org

Since 1953

April 2005

Saturday April 16, 2005 - Special Visitors to the Tower

A tour group of about 60 people from the Norwalk River Watershed Association (www.norwalkriver.org) arrived by Metro-North at the South Norwalk station where they were greeted by SoNo Switch Tower Operators Anthony Gruerio and Roberta Ballard. They were then escorted to the SoNo Switch Tower Museum where they were greeted by Tony White and John Garofalo.



John Garofalo explains how the Tower operated and the functions of the switch levers on the top floor.



Below, Anthony Gruerio shows the group the 2nd floor.



Photos by Tony White



The group returns to Branchville at 3PM with **NH FL9 2024** on the head end of the train.

THE WESTCONN MANIFEST

is the official newsletter of the Western Connecticut Chapter of the National Railway Historical Society – (NRHS).

Articles which appear in

THE WESTCONN MANIFEST

do not express official NRHS position unless specifically noted as such.

Material from **THE WESTCONN**

MANIFEST may be reprinted in other publications, provided the credit is given.

Please address comments, any contributions of material, complaints and exchange copies of other chapter newsletters to:

Roberta Ballard, Editor
39 Great Plain Rd.
Danbury, CT 06811-3923

E-mail – editor@westctnrhs.org

The Western Connecticut Chapter of the NRHS is separately incorporated as a CT not-for-profit corporation.

The Chapter is involved in the preservation of American railroad history and artifacts.

Chapter Officers

- President : Buck Neulinger
president@westctnrhs.org
- Vice Pres. : Robert Westerfield
vp@westctnrhs.org
- Secretary : Roberta Ballard
secretary@westctnrhs.org
- Treasurer : John Mount
treasurer@westctnrhs.org
- Nat'l. Director : Tony White
nationaldirector@westctnrhs.org

The Chapter meets monthly, usually on the 4th Monday, at the United Congregational Church 275 Richards Ave. in Norwalk, CT or at the SoNo Switch Tower Museum 77 Washington St. Norwalk, CT at 8 P.M.

Meeting dates for 2005:

1/24, 2/28, 3/28, **4/25**, 5/23*, 6/27*, 7/25*, 8/22*, 9/26*, 10/24, 11/28 and 12/19.

April 25 will be the annual Chapter dinner held at Maneros restaurant.

*Chapter meeting to held at the SoNo Switch Tower in South Norwalk, CT

The SoNo Switch Tower Museum is maintained and operated by volunteers of the Western Connecticut Chapter.

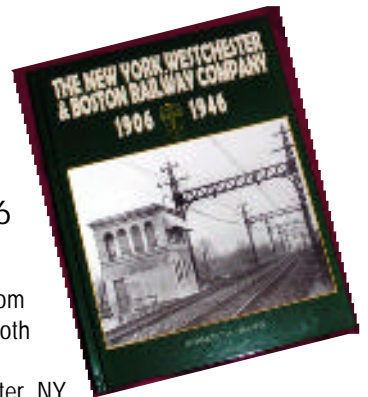
Western Connecticut Chapter - NRHS Inc.

77 Washington Street
Norwalk, CT 06854
203 246-6958

www.westctnrhs.org
www.sonotower.org

Book Review

By Robert Sposato



The New York, Westchester and Boston Railway Company 1906-1946

By Robert A. Bang

This book chronicles the New York & Boston Railway from its beginnings to its demise on New Year's 1938. It had both passenger and freight traffic. Major stations were in White Plains, Scarsdale, Larchmont, Rye, and Port Chester, NY.

The latter station was the passenger terminal. It planted the seeds for the New Haven line.

Passenger operations began in 1912 and lasted for 25 years until Jan. 1, 1938. My favorite photos include a family observing a 2-car train at Mamaroneck, another duo at Columbus Avenue, and a single car at New Rochelle.

As previously mentioned, there was freight service. My favorite photos have a single electric on an 11-car train and a duo on a 20-car train at Columbus Avenue & Quaker Ridge respectively.

This book also has a section of newspaper headlines on its last days and a section of what remains today from the old New York & Boston Rail Line.

In conclusion, I would recommend this book for Rail historians and modelers who are interested in the primitive days of railroading on the New Haven and Harlem lines in their ancestry. (Scarsdale and White Plains, NY are part of the Harlem Line.) Nevertheless it is an interesting book.

Respectfully yours,
Robert Sposato



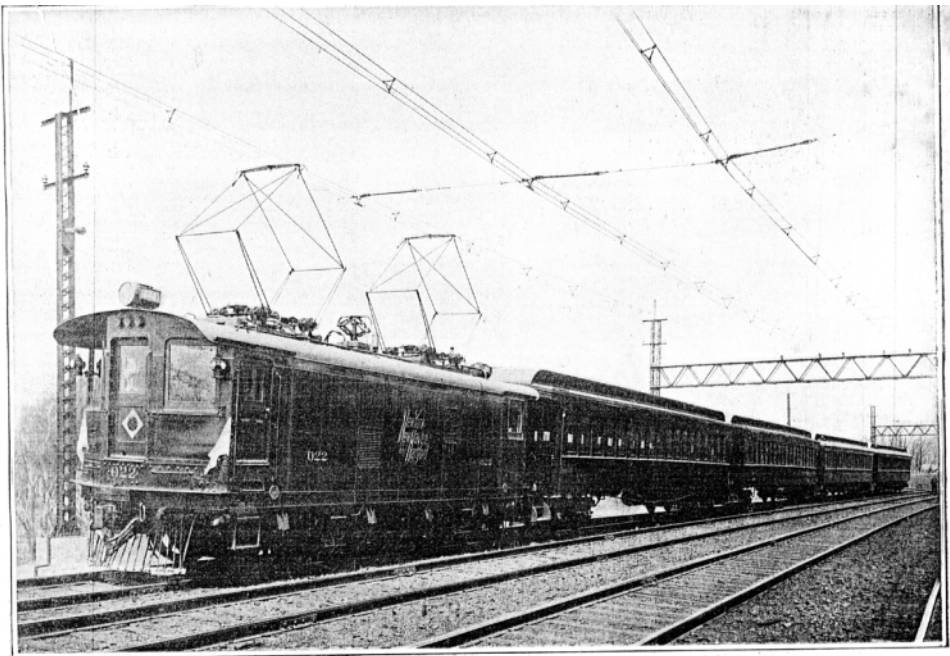
Preparing for the new season at the SoNo Switch Tower Museum on April 3.



Photos by Robert Gambling



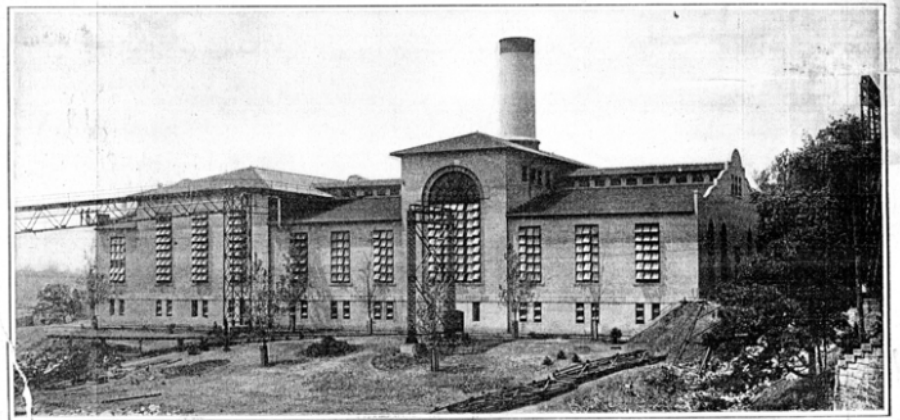
Tower volunteers were at the Greenwich Train show on March 20 to raise money for the Museum.



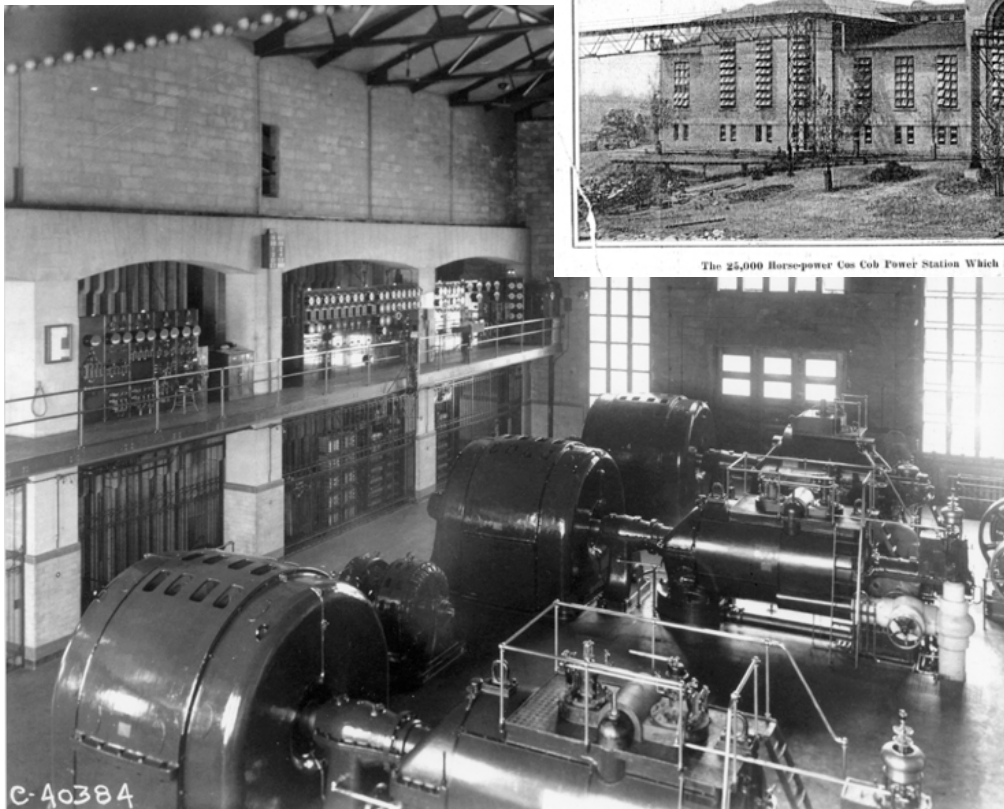
First Electric Train of the New Haven Road to Enter New York City.
 INAUGURATION OF THE NEW HAVEN RAILROAD ELECTRIC SERVICE. —[See page 79.]

"Al Brecken would like to mention that it was 100 yrs. ago- 1905- that the **NH** initiated the "1St-step" of it's notable electrification system. This was the design of a "prototype" electric locomotive that was propelled with A.C. traction motors. Al acquired a photo of this pioneer locomotive taken when the locomotive was still in the "prototype" phase of construction, and the photo is dated "1905".

Cos Cob Power Plant photos from the collection of Al Brecken.



The 25,000 Horse-power Cos Cob Power Station Which Supplies the 22 Miles of Road from Stamford to Woodlawn.



C-40384

Westconn Schedule of Events

Monday - April 25 - Annual Chapter at Maneros Restaurant, Greenwich, CT.

Saturday - April 30 - SoNo Switch Tower Museum re-opens for the season.
12-5 PM every Saturday & Sunday thru October.

Saturday - May 7 - Long Island-Sunrise Chapter of the NRHS Spring Outing to the SoNo Switch Tower Museum Norwalk, CT.

Monday May 23 - Chapter Meeting - SoNo Switch Tower Museum - 8PM
Entertainment - Dan Gallo Sr. slide presentation "Railroads of Maybrook"

Sunday - June 5 - 11th Annual Norwalk Harbor Splash Festival.
11am - 5pm Features: Hong Kong Dragon Boat races,
Chowder cook off, music & entertainment.

Monday - June 27 - Chapter Meeting - SoNo Switch Tower Museum - 8PM
Entertainment - Anthony Gruerio

Saturday & Sunday, Aug. 6 & 7 - The 29th Annual SoNo Arts Celebration.
Saturday, Aug. 6: 10AM - 8PM Sunday, Aug. 7: 11AM - 6PM
Giant Puppet Parade: 3PM www.sonoarts.org

Monday - Aug. 22 - Chapter Meeting - SoNo Switch Tower Museum - 8PM
Entertainment - Tony Fitzherbert

Monday - Sept. 26 - Chapter Meeting - SoNo Switch Tower Museum - 8PM
Entertainment - Ed Blackman

Friday Sept. 30 - Sunday Oct. 2 - Western Connecticut Chapter Fall outing to North Conway, NH. Ride the dome railroad car to Crawford Notch on Saturday and ride the Cog on Sunday. Only \$315 per person (based on double occupancy). Save the dates!



The Western Connecticut Chapter, NRHS Inc. supports Operation Lifesaver

**Our Next Chapter meeting will be
Monday, April 25, 2005**

At:

**Maneros Restaurant
559 Steamboat Road
Greenwich, CT
(203) 869-0049**



**Annual Chapter Dinner - cash bar 6:30
Dinner at 7:30**

The Sono (Railroad) Switch Tower Museum

is only open on Saturday's and Sunday's
April 30 thru October from noon until 5 PM.

Please help us show the Tower and how it operated to the public.

To volunteer, contact Jim Mescher at:
(201) 391-7362

or sign up at the Tower.

Thank you, your help is greatly appreciated.