



The WestConn Manifest

The Monthly Newsletter of the
Western Connecticut Chapter of the
National Railway Historical Society



www.westctrhs.org

Since 1953

March 2007

**From Howard Pincus
Exciting things happening at Thomaston!!**

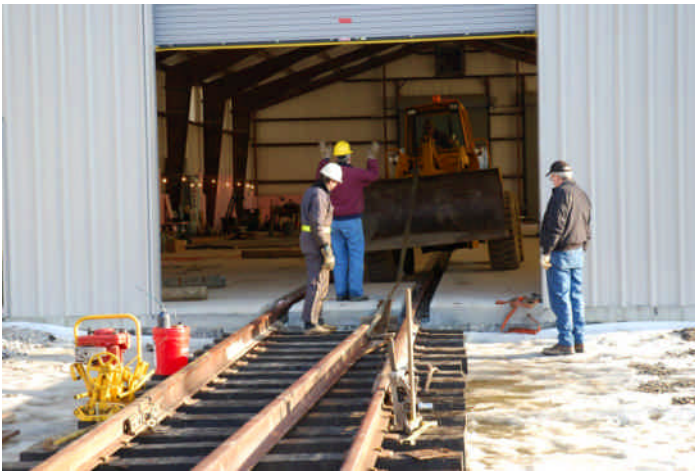
Work continues on the new shop facility for the Railroad Museum of New England And The Naugatuck Railroad

As of Sunday afternoon, March 11, the first shop track is now connected to the general US railroad system. Compromise joints were installed, with a bit of additional drilling, more rail was pulled into the shop, joints were bolted and set in place, and the "office track" is now complete to within 22 feet of the south door. The final sections of rail that will take the track outside the south end will be set in place later, after the finish grading is done on the south end of the shop, in April.

One section of rail was about 1/2" too long, so it was cut off with the rail saw.

Once the ice melts on the north end of the shop, the track will be lifted and surfaced, so that rolling stock can roll into the shop.

Photo credit: Howard Pincus



THE WESTCONN MANIFEST is the official newsletter of the Western Connecticut Chapter of the National Railway Historical Society – (NRHS). Articles which appear in **THE WESTCONN MANIFEST** do not express official NRHS position unless specifically noted as such. Material from **THE WESTCONN MANIFEST** may be reprinted in other publications, provided the credit is given.

Please address comments, any contributions of material, complaints and exchange copies of other chapter newsletters to:

editor@westctnrhs.org

or

Western CT Chapter, NRHS
77 Washington St.
Norwalk, CT 06854

The Western Connecticut Chapter of the NRHS is separately incorporated as a CT not-for-profit corporation.

The Chapter is involved in the preservation of American railroad history and artifacts.

Chapter Officers

President : Buck Neulinger
president@westctnrhs.org
Vice Pres. : Robert Westerfield
vp@westctnrhs.org
Secretary : Roberta Ballard
secretary@westctnrhs.org
Treasurer : John Garofalo
the 2007 treasurer@westctnrhs.org
Nat'l. Director : Tony White
nationaldirector@westctnrhs.org

The Chapter meets monthly, usually on the 4th Monday, at the **United Congregational Church 275 Richards Ave. in Norwalk, CT** or at the SoNo Switch Tower Museum 77 Washington St. Norwalk, CT **at 7:30 P.M.**

Meeting dates for **2006**:

1/22, 2/26, **3/26**, Annual Dinner- April 16, 5/21*, 6/25*, 7/23*, 8/27*, 9/24*, 10/22*, 11/26 and 12/17.

*Chapter meeting to be held at the SoNo Switch Tower in South Norwalk, CT

The SoNo Switch Tower Museum is maintained and operated by volunteers of the Western Connecticut Chapter.

Western Connecticut Chapter - NRHS Inc.

77 Washington Street
Norwalk, CT 06854

203 246-6958

www.westctnrhs.org
www.sonotower.org



We now have Western Connecticut Chapter and SoNo Switch Tower pins for sale in the Museum Gift Shop or by mail. Cost is only \$5.00 each and members receive a 10% discount.



THANK YOU! THANK YOU! THANK YOU!
Ed Holowinko and John Garofalo
For shoveling the snow at the SoNo Switch Tower Museum!

REMINDER

If you have not paid your 2007 dues, please do so as soon as possible. The grace period ends March 31, 2007 at which time unpaid members will be dropped from the NRHS. Thank you.

Welcome New Members:



Don Konen - Carmel, NY
Patty Osmer - Carmel, NY

Correction: last month's new member:
David Stavans - Yorktown Heights, NY

NRHS Grants Budget to Increase

Because of recent donations from NRHS members, the total funds available to 2007 Railway Heritage Grants program will be increased over the original \$33,000.00 budget. The exact amount of the increase will be determined over the next few months.

Contrary to a popular misconception, the Railway Heritage Grants program is not funded from membership dues money. All funding for the grants program comes from donations and from earnings of the NRHS Heritage Preservation Fund. If the Society receives substantial donations directed to the grants program between the approval of the annual budget and the due date for proposals, the added funds are placed in the current year's awards pool.

Every year, the NRHS receives proposals from many important and valuable preservation projects, many more than we can support with the funds available. With so many urgent needs, we want to put the funds to work as soon as possible, not hold them for the following year.

There is still time for NRHS members to donate to the 2007 grants program. You can send donations by check or credit card to the NRHS at 100 N 17th Street, Suite 1203, Philadelphia, PA 19103-2783. Please note on your payment that the donation is for the grants program.

A little Railroad Humor

One day an engineer calls the dispatcher and asks him for the time. The dispatcher responds by asking him what road he works for. The engineer is a little annoyed and snaps "What difference does that make?"

"Well," the dispatcher draws, "if you work for the BN it's 2 pm; if you work for the UP it is 1400; if you work for the Norfolk Southern or CSX the big hand is on the 12 and the little hand is on the 2; and if you work for Amtrak it's Tuesday!"



Photo by Dana Laird

Westport, CT

Built by the New York, New Haven & Hartford Railroad, this tower opened for service July 30, 1916. The tower had a machine built by the General Railroad Signal company and had 16 mechanical and 32 automatic levers, making it an electromechanical machine. This machine was one crossover short of being a universal machine; a universal machine eliminated the need for trains to make reverse moves to change racks.

The tower was put out of service in the early 1960's; it helped to create it's replacement by moving the materials needed to build the Connecticut Turnpike.

The Number "53" in Signal Station 53 refers to the mileage from Grand Central Terminal.

Rail news from James Eisenhart Jr.

CSXT derailed an unknown train to me on the old **PL&E** line around Beaver, PA. I was running an **NS** train 076 from Harrisburg, PA to **CSXT** Hagerstown, MD. This train was detoured **Q-216** which is a daily auto-rack train from the Detroit area to Twin Oaks, PA, near Chester, PA. The facility is visible from interstate 95. The train carries Fords, Dodges, and Chevrolets.

Due to the two tunnels with low clearances they were unable to detour it straight from Harrisburg to the Philadelphia area. The train operated over the **NS** Pittsburg line, and the **NS** Lurgan branch to **CP-Town** at Hagerstown, MD where we passed it off to a **CSXT** crew, which took it to Hancock, MD, ran around it, and took it east to Baltimore, MD, and then to Twin Oaks. Needless to say they were late. The railroad was detouring on the morning of the seventh, when I had to shove a stalled **071- CSXT** general manifest freight from **CO-Paxton** interlocking in Harrisburg, PA to Camp Hill, PA, up and over the Susquehanna river bridge. The leader of my **076** was an ex **Conrail C-40-8W #7340 - ex CR 61** with an ex **SP/UP SD-40-T2** tunnel motor in silver body and red **SP** type end paint.

(Jim is an engineer for the Norfolk Southern Railroad)

Tuesday, Mar 6, 2007

Posted on Sun, Mar. 04, 2007

8 cars on CSX freight train derail

Eight cars of a CSX freight train derailed in Beaver County on Saturday night, but none of the cars were carrying hazardous material and no injuries were reported, company officials said.

The derailment occurred at about 5:25 p.m. between Wampun and Beaver Falls in Western Pennsylvania, about 10 miles from the Ohio-Pennsylvania border. The 61-car train was traveling from Indianapolis to Cumberland, Md.

Four of the cars that derailed were carrying industrial coke, a chunky byproduct of steelmaking. Two others were refrigerator boxes and the other two were carrying corn syrup, CSX spokesman Gary Sease said.

Sease said no residents in the area were evacuated because no hazardous material was involved. The derailment is under investigation and workers will attempt to "re-rail" the toppled cars and repair the track in the area, Sease said.

Related article Reprinted from the Centredaily



An easy way for you to help your Chapter.

If you do on-line shopping you can earn money for The Western Connecticut Chapter
 By going to either www.westctnrhs.org or www.sonotower.org and clicking on the Shop for Charity Day banner.
 or www.shopforcharityday.com/4052

This will take you to their site and as long as you stay within this link - your purchases will earn a percentage of your purchase for the Chapter.

They have over a 1,000 stores listed. Just look for the store you want to shop from or browse through the list. The prices are the same and our chapter benefits from your purchases.

This is just a few of the stores listed on the site:

Ebay ecost Eddie Bauer MacMall Macys Museum Store Company Thompson Cigar Lillian Vernon
 Target Gap Kalmbach Publishing Buy.com USA Kohl's Sierra Trading Post Old Pueblo Traders
 Sharper Image Brookstone eBags Flowers USA 1-800-PetMeds and many more!

This site does not require you to give any personal information, nor are there any hidden charges .

Thank you!

Please contact Roberta Ballard at: 203 792-8558 or editor@westctnrhs.org if you have any questions or concerns.

Use goodsearch.com and earn \$\$\$\$\$\$ for our Chapter.
 Just go to www.goodsearch.com and type NRHS in the "Who do you Goodsearch for?" box - you should see Western Connecticut Chapter - NRHS appear.
 Every search will help our chapter.
 You can add the toolbar to your browser.

Westconn Schedule of Events

Monday March 26: 7:30 pm Monthly Chapter meeting at The United Congregational Church Norwalk, CT

Friday March 30 & Sunday March 31: East Coast Large Scale Train Show York Fairgrounds, York, PA
 Friday 9:00 am to 8:00 pm - Saturday: 9:00 am to 4:00 pm.
 One day admission: 10.00 - Two day admission: 18.00 Children under 12 free

Monday April 18: Annual Chapter Dinner at - The Waters Edge At Giovanni's II 2748 Post Road, Darien, CT
 6:30 pm - \$40.00 per person. Reservations must be made before April 6.



The Western Connecticut Chapter, NRHS Inc. supports Operation Lifesaver

Our Next Chapter meeting will be held at **7:30 PM** on
Monday, March 26, 2006 at:

The United Congregational Church
275 Richards Ave., Norwalk, CT

Entertainment will be provided by:

Those bringing their
20 "BEST" slides!

Bob Gambling will provide refreshments



CONRAIL



*Conrail and (log) are registered service marks of Consolidated Rail Corporation"